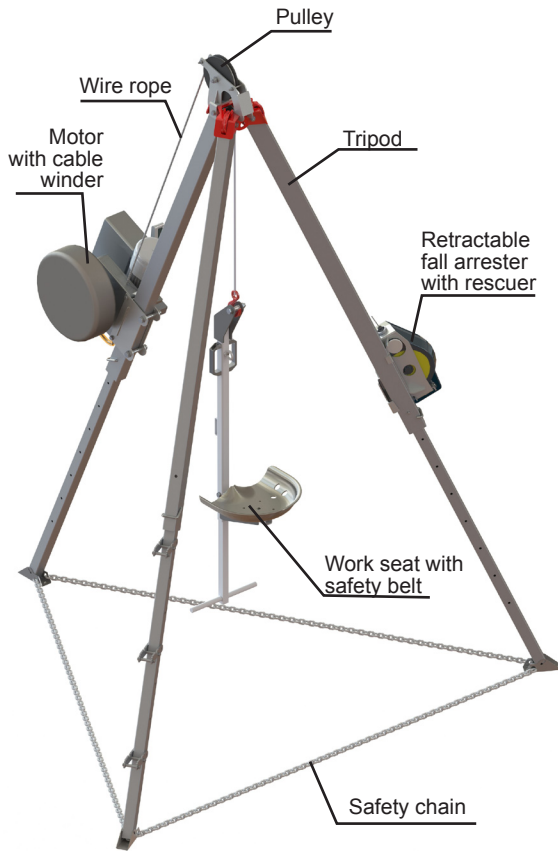


MOTORIZED TRIPOD



TECHNICAL INFO

Motorized tripod ideal for safe work in confined spaces with access from vertical manhole where there is no ladder or equivalent access system.

It is a safe and certified equipment for lifting people, with CE marking and does not require vertical work training to be used.

To guarantee the safety of the people, it uses an electric lift with a manual rescue option in case of failure of the electrical system. On the other hand it has a retractable fall arresting system with rescuer that allows the rescue of the operator even if this outside the chair.

The equipment is delivered with corresponding certificates for lifting people, as well as instruction manuals. It does not require special training to be used.

TECHNICAL FEATURES

- Lifting-lowering motorized device

XS 300P elevator	
Weight Load Limit (W.L.L.)	150 daN
Lifting and lowering speed	9 m/min.
Dead weight	40 Kg.
Motor power	0,5 kw.
Maximum wire rope length	40 mts.

- Safety device

Fall arrest device	ANRW-300
Quantity	1
Braking force	5 kN
Dead weight	15 Kg.
Weight Load Limit (W.L.L.)	140 kg.
	(1 person)

- Suspension wire rope for Tirak

Anti-rotation type	
Breaking load	45,2 kN
Quantity	1
Diameter	8 mm.

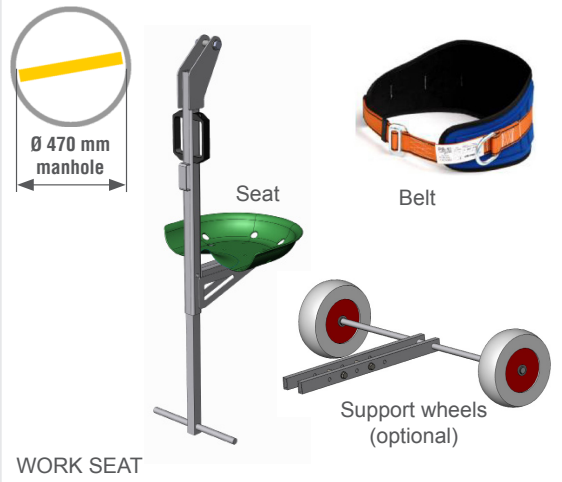
SAFETY DEVICES

- **Overload detector**, stops movement in case of overload.
- **Electromagnetic brake**, brakes the motor shaft when it is not in tension.
- **Thermal probe**, protects the motor in case of overheating.
- **Upper limit switch**, stops the movement of ascent.
- **Emergency descent**, allows the descent in case of power failure.
- **Centrifugal brake**, Keeps constant the speed of emergency descent.
- **Work and safety wire rope**.
- **Safety coefficient of the wire ropes**

Advantages

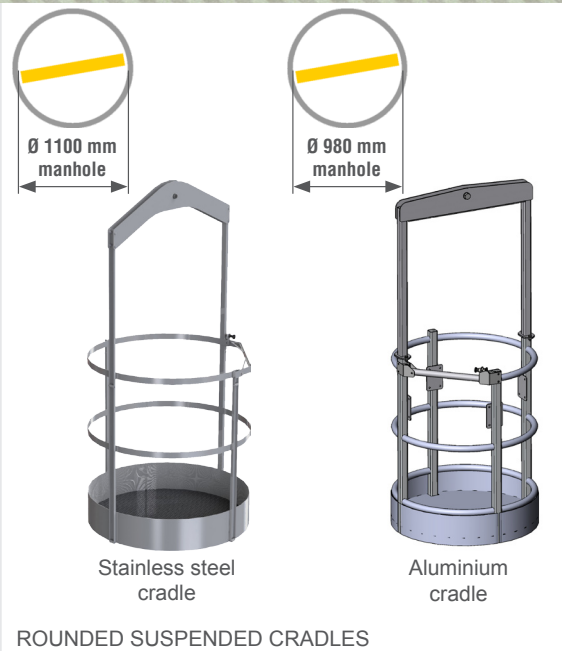
- Simple, safe and comfortable.
- Easy to store, transport and assemble.
- Manegeable and easy to use.
- Unlimited working height.
- Pass through manholes (500 mm).
- Integrated fall arrest safety system.
- Light and ergonomic.
- Automatic passage of the wire rope.
- Constant lifting force and speed.
- Suitable for personnel with no degree of vertical work (we recommend training of works in height).
- EC marked and certified according to Directive 2006/42 / EC.

MOTORIZED TRIPOD



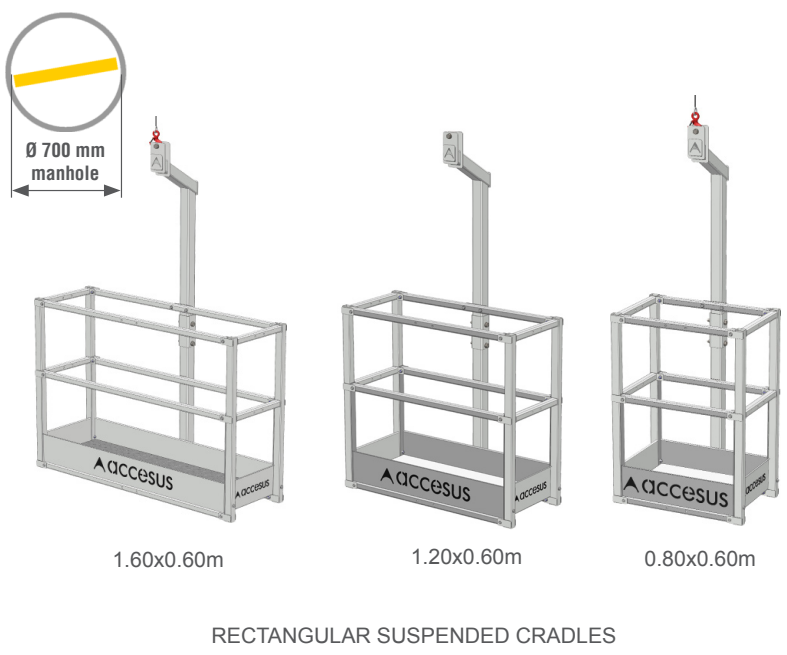
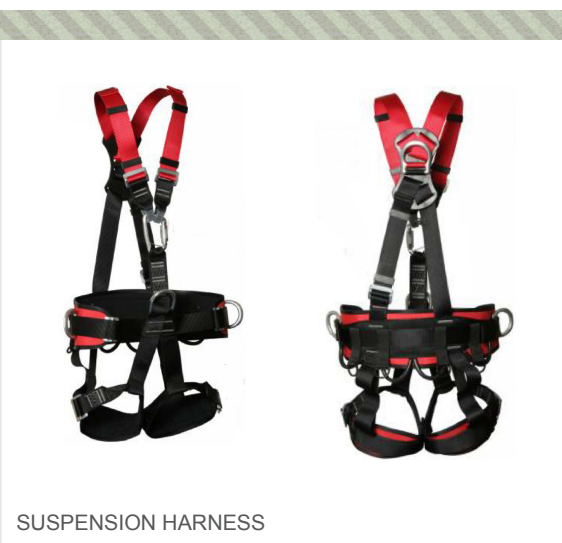
Suspended work seats & cradles available:

- **Suspended work seat** with belt & detachable support wheels (optional). Unassembled passes into Ø 470 mm manholes (max dimension 415 mm).
- **Rectangular suspended cradle detachable.** Available in **0.80, 1.20 or 1.60 m** length. Unassembled passes into Ø 700 mm manholes (max dimension 640 mm).
- **Rounded suspended cradle.** Available in **stainless steel** Ø1.04 m (chemical plants...) or made of **aluminium** Ø0.92 m (lightweight). Unassembled passes into Ø 1.100 mm manholes (max dimension 1.040 mm) or Ø 980 mm manholes (max dimension 920 mm).
- **Suspension harness** meeting EN361, EN358, EN813 standards.

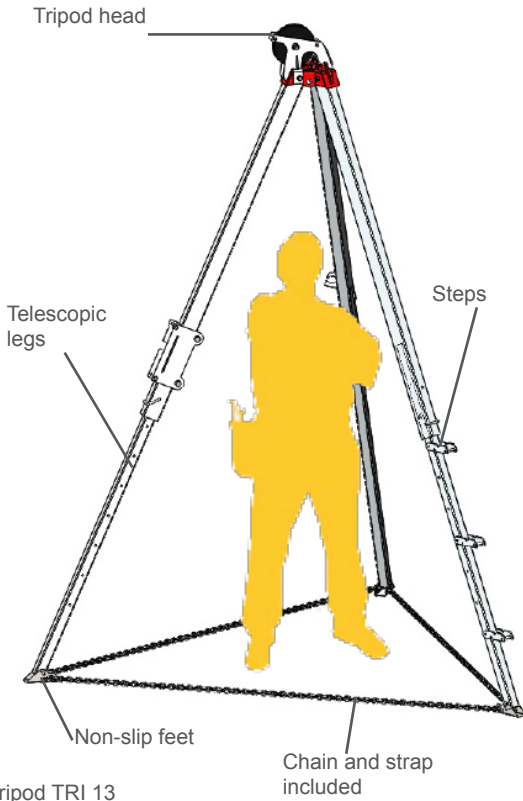


LOAD TABLE OF THE TRIPOD SEAT & CRADLES

Weight Load Limit (W.L.L.)	120 kg
Number of people	1
Weight of the seat	10 kg
Weight of the stainless steel cradle	60 kg
Weight of the rectangular cradle	90 kg
Weight of the rounded aluminium cradle	45 kg



TRIPOD OR SUSPENSION STRUCTURE



Tripod TRI 13

TECHNICAL INFO

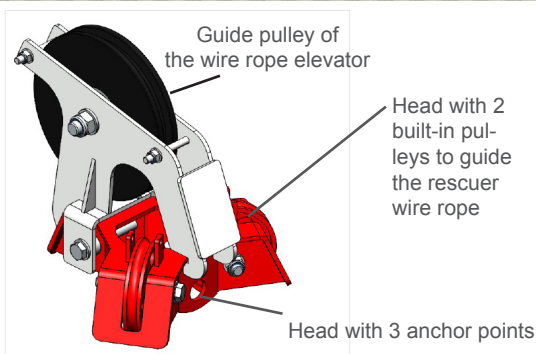
TRI 13 safety tripod.

TRI 13 safety tripod for a working height from 1,79 to 2,89 m.

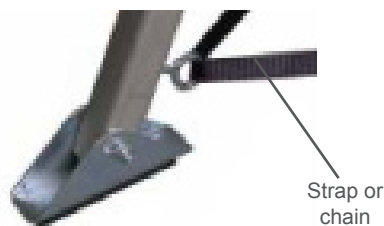
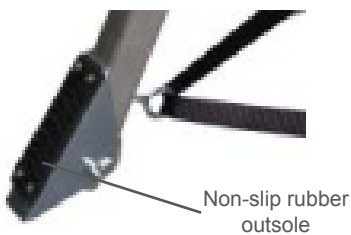
Equipped with 3 pulleys built into the head of the tripod, 3 anchor points on the head, telescopic legs with 9 possible adjustment points and steps, non-slip feet and included chain or strap for fixing the legs.

Technical features:

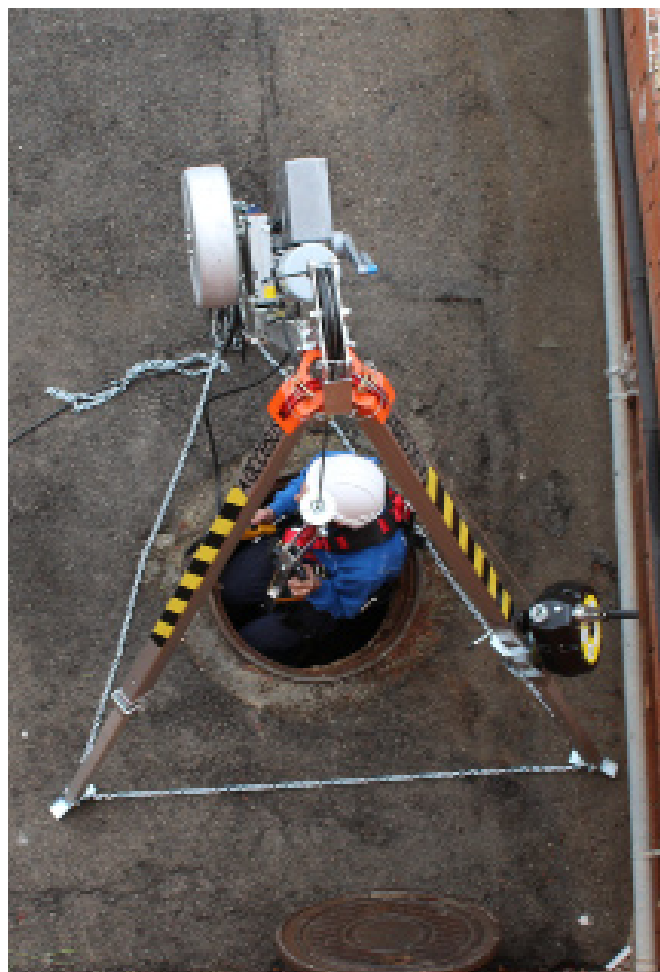
- Material: aluminum alloy
- Suitable for 1 person in suspended seat.
- Working height: from 1.79 to 2.89 m.
- Diameter between legs: from 1.73 to 2.71 m.
- Distance between legs: from 1.47 to 2.32 m.
- Weight: 41 kg.
- Folded dimensions: 2,10 x 0,30 x 0,30 m.
- Retractable fall arrester with rescuer ANRW 300
- It complies with the standard EN 795 B of temporary and transportable anchoring devices and with the standard TS 16415: 2012. It complies with the regulations UNE-EN1808 and the Europea Directive 2006/42 / EC.
- EC Certificate.



Tripod TRI 13 Details



ANRW 300 connected to tripod head or leg with TRI 172 adapter



Enable 3D View

