



## PLACFIX V ANCHOR PLATE FOR SUSPENSION OF SCAFFOLDING



PLACFIX V Anchor plate for suspension

### TECHNICAL INFO

ACCESSUS PLACFIX V anchor plate for suspension of platforms, cabins and hanging chairs from a vertical face.

ACCESSUS PLACFIX V plate is fixed to the underside of slabs (forged structure, concrete slabs, etc.) which must be vertical.

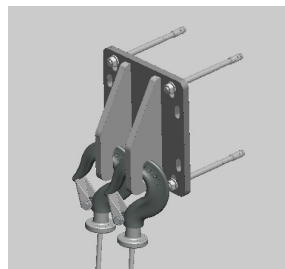
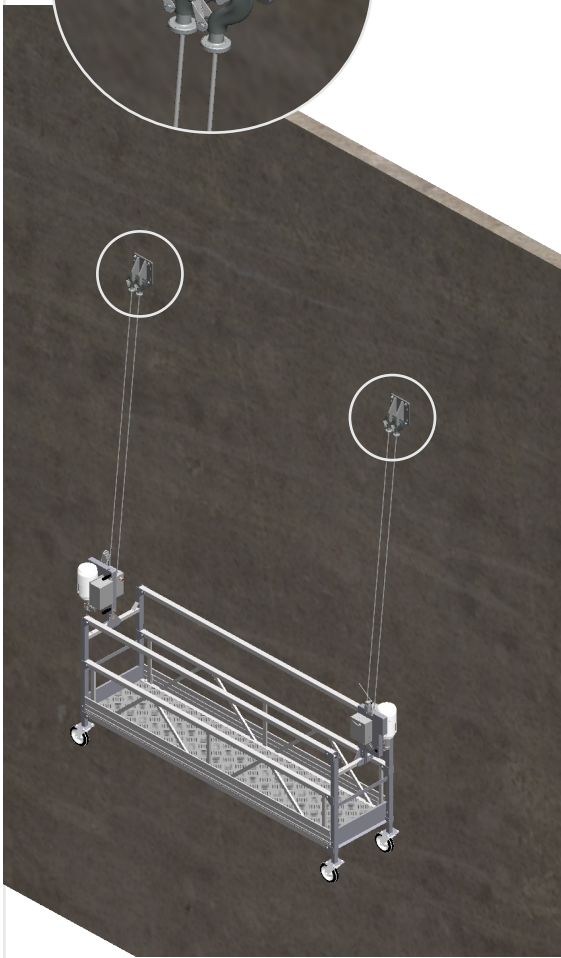
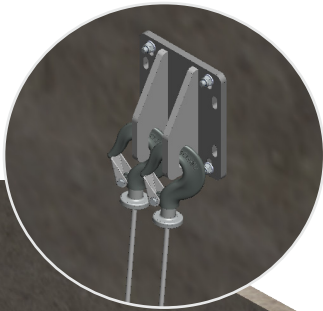
The plate ACCESSUS PLACFIX V can be fixed to the slab in 3 different ways:

- 1.- By mechanical anchorage with 4 screws M12 Hilti type.
- 2.- By chemical anchorage with 4 screws M12 Hilti type.
- 3.- With counterplate and 4 M12 threaded rods.

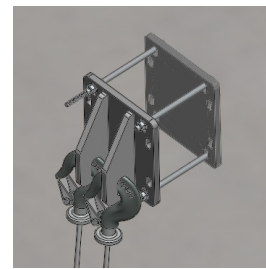
On the “ears” of the plate will be housed the hooks of the end of the suspension wire rope of the suspended scaffolding.

### TECHNICAL FEATURES

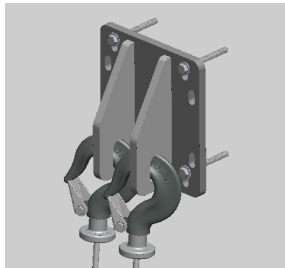
- Compatible with lifts whose maximum load capacity is: 300 - 400 - 600 - 800 kg.
- Made of galvanized steel
- Dimensions: 250 x 225 x 99 mm.
- Screw anchorage M12.
- Weight of the plate: 9,5 Kg. Weight of counterplate: 6,5 Kg.
- According to EN 1808.
- EC marked.



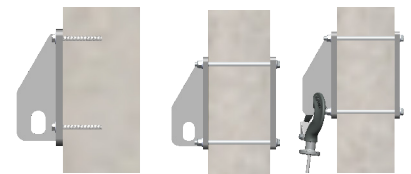
Fixing by mechanical anchor (1)



Fixing by Threaded rods and counterplate (3)



Fixing by chemical anchor (2)



Side views of the different types of slab fixings.

### TYPES OF FIXATION TO THE SLAB