

### **ORIGINAL INSTRUCTION MANUAL**

**This manual must always be available to the user.  
Ask for more copies if you need them.**

## Index:

|   |           |
|---|-----------|
| <b>1. Information about the manual</b> .....                        | <b>3</b>  |
| <b>2. Symbols used in this manual</b> .....                         | <b>3</b>  |
| <b>3- General:</b> .....  | <b>4</b>  |
| 3.1 Glossary and abbreviations used in this manual .....            | 4         |
| <b>4- Description of the equipment</b> .....                        | <b>5</b>  |
| 4.1- Field of application .....                                     | 5         |
| 4.2- Configurations .....   | 6         |
| 4.3- Main components .....  | 7         |
| 4.4- Dimensions and weight .....                                    | 8         |
| <b>5- Instructions and pre-commissioning checks</b> .....           | <b>9</b>  |
| <b>6- Prohibitions</b> .....  | <b>11</b> |
| <b>7- Loads transmitted by the Placfix V Suspension Plate</b> ..... | <b>12</b> |
| <b>8- Assembly</b> .....  | <b>13</b> |
| 8.1- Mounting configuration mechanical anchorage .....              | 13        |
| 8.2- Mounting configuration chemical anchorage .....                | 14        |
| 8.3- Anchorage configuration assembly threaded rods .....           | 15        |
| <b>9- Mounting the cables</b> .....                                 | <b>16</b> |
| <b>10- Labels</b> .....   | <b>17</b> |
| <b>11- Maintenance</b> .....  | <b>18</b> |
| <b>12- History</b> .....  | <b>19</b> |

**DANGER!**

**Risk of injury from falling objects, failure, misapplication and/or misuse.**

Read the entire instruction manual thoroughly before installation and commissioning of the machine. The instructions and procedures described in this instruction manual must be followed to ensure safe use of the equipment.

## 1. Information about the manual

|  |  |
|--|--|
| <b>Date of edition:</b>  | <b>Manufacturer:</b>   |
| 1ª Edition: 07/2020  | <b>ACCESUS plataformas suspendidas, S.L.L.</b><br>Travesía Industrial 101, nave 6,<br>08907 L'Hospitalet de Llobregat (Barcelona)<br>Telf.: 93 187 54 23<br>www.accesus.es<br>accesus@accesus.es |
| <b>Industrial property rights:</b><br>All rights reserved on the ownership of this instruction manual. |  |

## 2. Symbols used in this manual

**DANGER!**

**Type and source of danger**

Result: e.g. death or serious injury.

-Measures to be taken to eliminate the danger

**IMPORTANT!**

**Type and source of danger**

Result: e.g. damage to equipment or the environment.

-Measures to be taken to eliminate any possibility of accident

**NOTE**

This symbol does not identify with any safety instruction, it gives information to improve compression.

### 3- General:

This instruction manual is intended for operators of the product described. This instruction manual must be accessible to the operator at all times. Request further copies if needed.

ACCESUS Suspended Platforms, S.L. reserves the right to modify the product described in this instruction manual as part of its policy of continuous improvement.

Customers may obtain documentation on other ACCESUS products by requesting the documentation from ACCESUS through the means described in section 1 of this instruction manual. Please visit our website [www.accesus.es](http://www.accesus.es).

#### 3.1 Glossary and abbreviations used in this manual

|                   |  |
|-------------------|--|
| C.M.U.            | Maximum working load                   |
| Operator/Operator | Professional who handles the equipment |
| PST               | Temporary Suspended Platform           |
| C.M.U.            | Maximum working load                   |
| Operator/Operator | Professional who handles the equipment |
| PST               | Temporary Suspended Platform           |

#### IMPORTANT:

If you have to entrust the equipment described in this manual to sub-contracted personnel or similar, check and apply your obligations under the applicable national regulations on safety at work, particularly with regard to checks and tests before putting it into service.

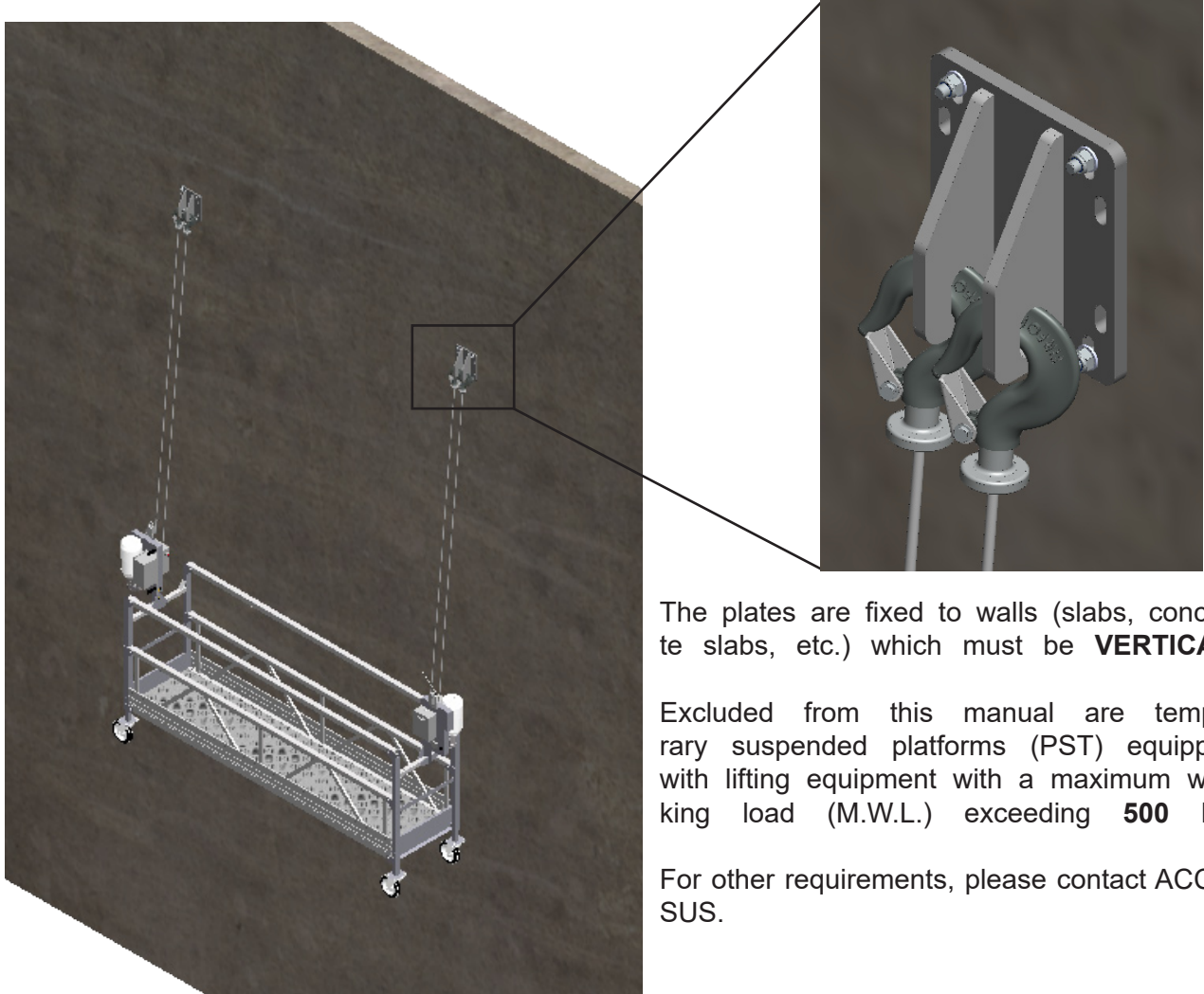
#### OCCUPATIONAL RISK PREVENTION PLAN:

According to Article 7 of RD 1627/97, each contractor must draw up an occupational health and safety plan in which the provisions contained in the study or basic survey are analysed, studied, developed and supplemented, depending on their own system for carrying out the work. See points 1 and 2 of the aforementioned RD.

## 4- Description of the equipment

### 4.1- Field of application

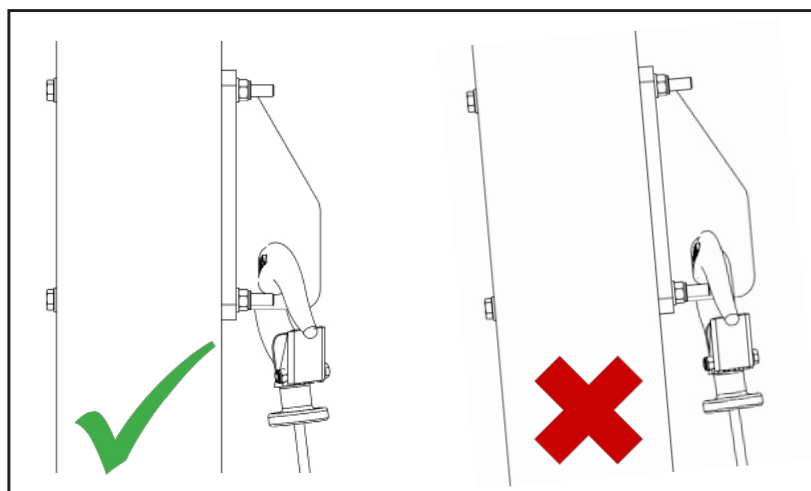
The Placfix V Suspension Plate 020049 is designed to support and maintain in position, from a vertical wall, a suspended scaffolding equipped with lifting motors with a load capacity of 500kg or less.



The plates are fixed to walls (slabs, concrete slabs, etc.) which must be **VERTICAL**.

Excluded from this manual are temporary suspended platforms (PST) equipped with lifting equipment with a maximum working load (M.W.L.) exceeding **500 kg**.

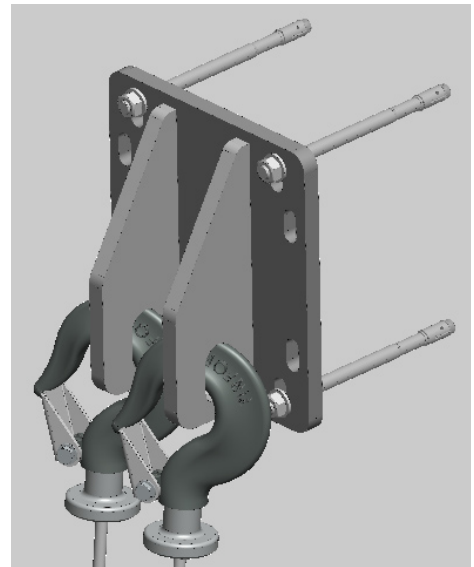
For other requirements, please contact ACCE-SUS.



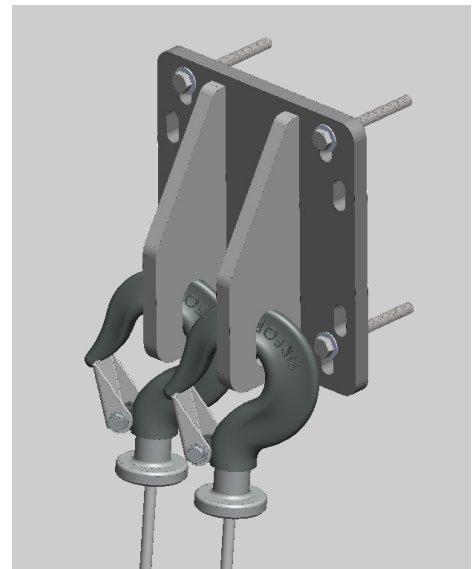
## 4.2- Configurations

The Placfix Suspension Plate 020049 can be fixed to the vertical wall in 3 different ways:

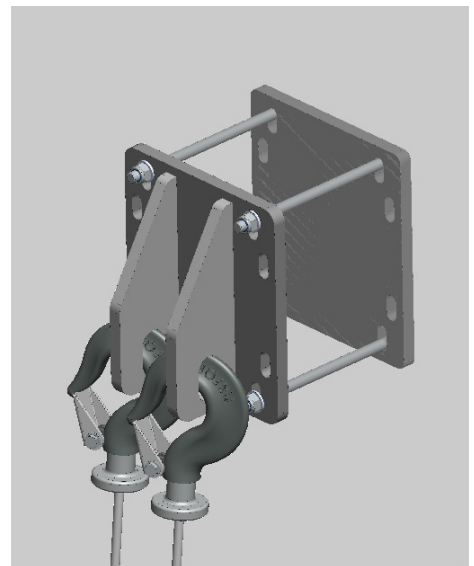
1- Using a **mechanical anchorage** with 4 Hilti® HST M12x115/20 screws or equivalent



2- Using 4 Hilti® HAS M12x110/28 **chemical anchorage** with HIT HY50 chemical cartridge or equivalent



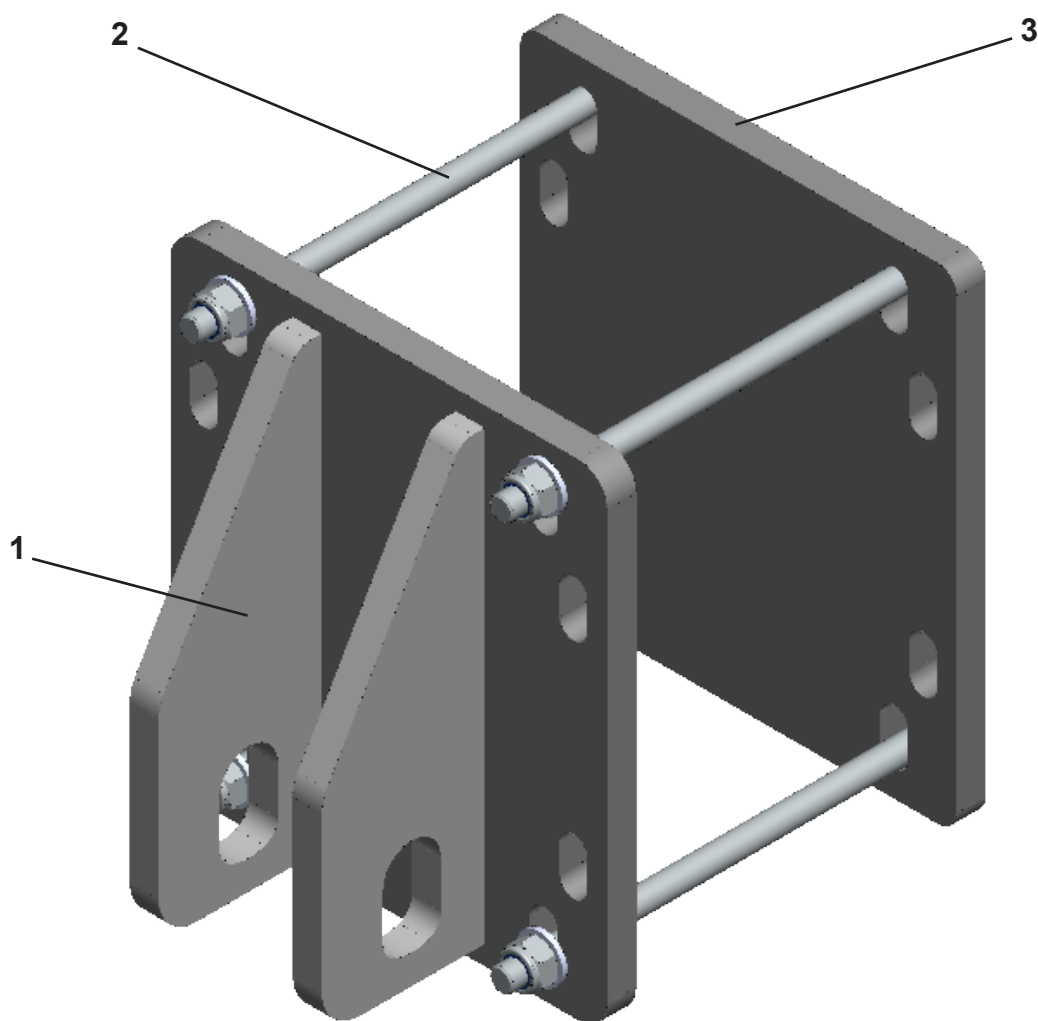
3- **With counterplate and 4 threaded rods** M12, minimum quality 8.8, together with their corresponding washers DIN125 and safety nuts DIN985 in. To do this, we will drill the 4 holes through which the threaded rods will pass and we will place the counterplate on the other side of the slab to sew the assembly.



### 4.3- Main components

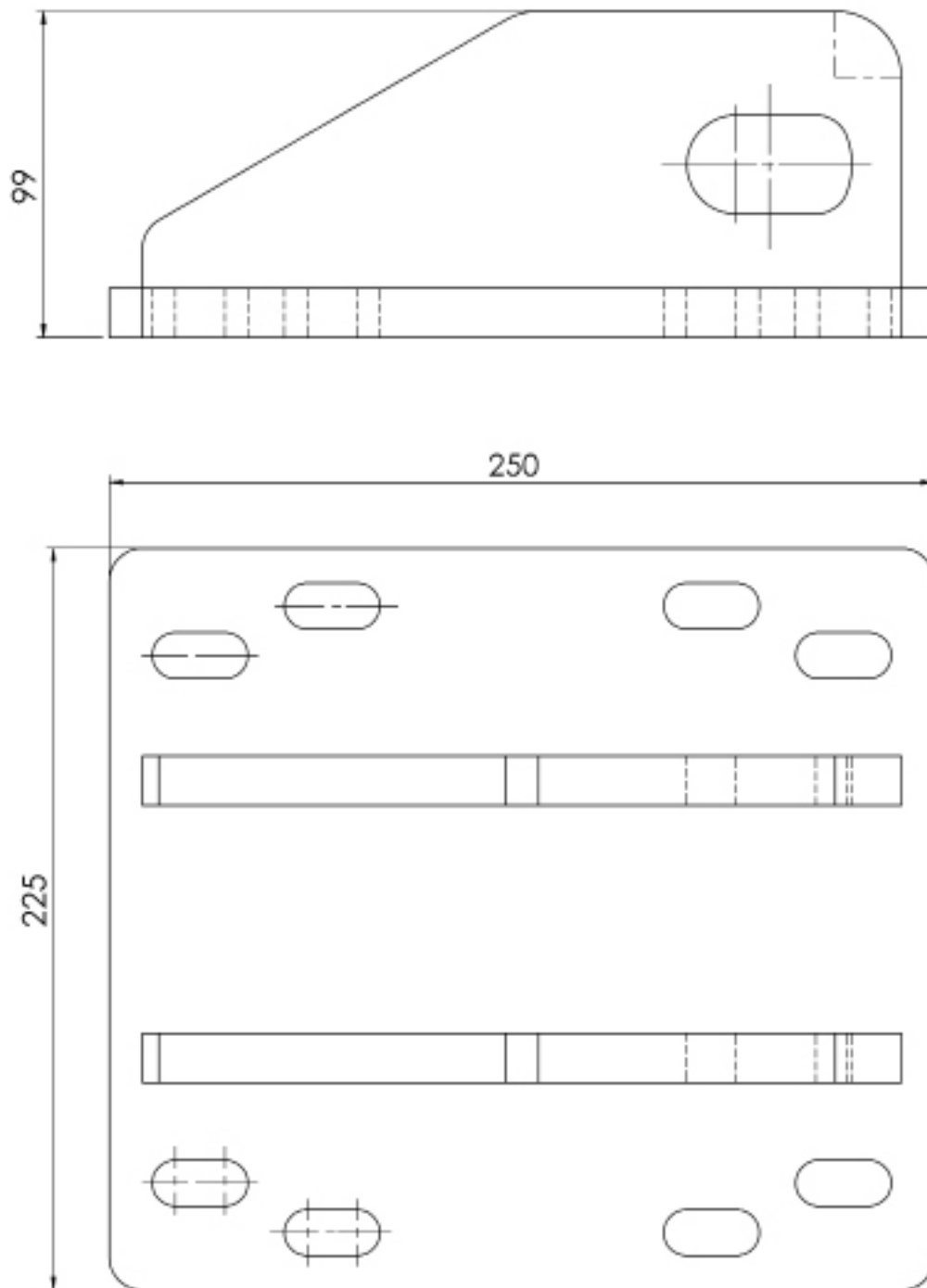
The Placfix 020049 Suspension Plate is composed of:

- 1- Plate with 2 galvanized ears.
- 2- Anchorage screws. This will vary depending on the configuration chosen:
  - a. Mechanical anchorage.
  - b. Chemical anchorage.
  - c. Anchorage with threaded rods. (Shown in the following figure)
- 3- Counterplate (if configuration 3) in galvanized finish.



#### 4.4- Dimensions and weight

The overall dimensions of the Placfix Hanger Plate are as follows:



The weight of the plate with clamping ears is 9.5 kg.

The weight of the counter plate is 6.5 kg.



## 5- Instructions and pre-commissioning checks



### IMPORTANT!

**Risk of injury from falling objects, falling to different levels and/or breakage.**

Risk of death due to falling objects, falling to different levels and/or breakage.

**Before mounting the Placfix V Hanger Plate, make sure that the support surfaces have sufficient capacity to withstand the forces due to the suspended loads. If it is necessary to consult the site manager about the permissible loads.**

1- Read this manual carefully to install, use and maintain the Placfix V Suspension Plate 020049 in a perfect state of cleanliness. Any use contrary to our prescriptions presents dangers and cancels the responsibility of Accesus.

2- Do not use the Placfix V Hanger Plate without reading and understanding this manual. It must always be near the plate and available to the operator and/or persons in charge of maintenance.

3- Respect and make sure that the safety regulations are respected.

4- Two operators are required to install the Placfix V Suspension Plate.

5- If it is necessary to mount the suspension plate in a place that is dangerous for the operator, the safety precautions foreseen by the work regulations must be taken to exclude any risk not foreseen in this operation.

6- The Placfix V Suspension Plate must not be used in explosive environments.

7- If the plate is used outside, it must be protected against bad weather.

8- Never use a device that is not in good condition.

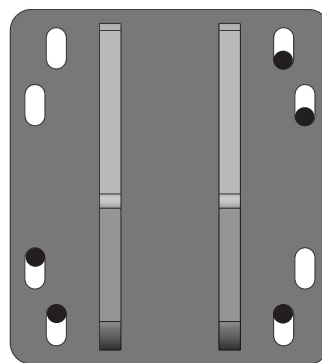
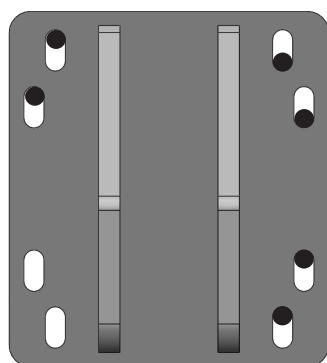
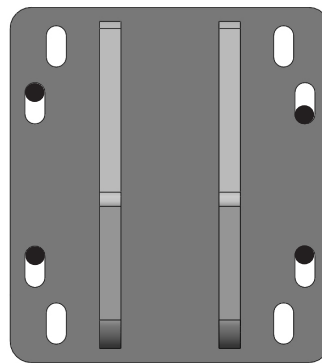
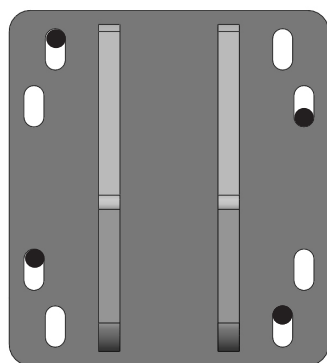
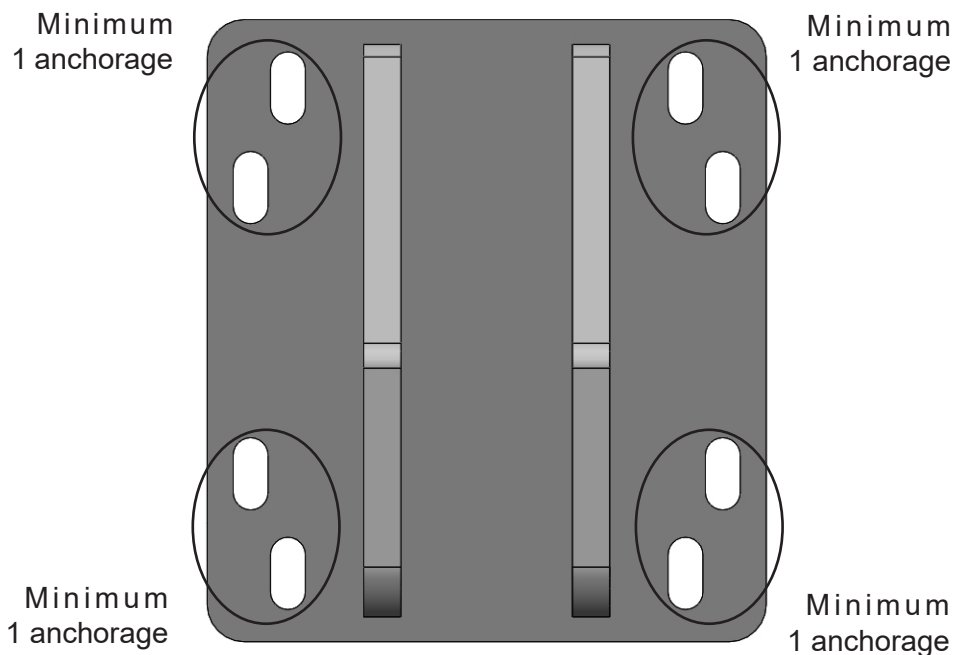
9- Verify that the load capacity of the Placfix V Suspension Plate is greater than or equal to the load capacity of the lifting equipment on the suspended platform.

10- Verify that the capacity of the slab is sufficient to safely support an effort 2.5 times the maximum capacity of the PST lifting devices.

11- In the event of finding anomalies in the Placfix V Suspension Plate, the user must immediately stop its use and notify a competent person.

12- Any assembly that does not conform to the one described in this manual will be considered under the full responsibility of the user, ACCESUS declines all responsibility.

13- The plate must be anchored by at least 4 anchors, which must be mounted according to indicate the following images:



It is forbidden to use the plate if the above-mentioned anchors are not installed.

## 6- Prohibitions



### IMPORTANT!

**Risk of injury from falling objects, falling to different levels and/or breakage.**

Risk of death due to falling objects, falling to different levels and/or breakage.

**Do not under any circumstances carry out the warnings described in the following list.**

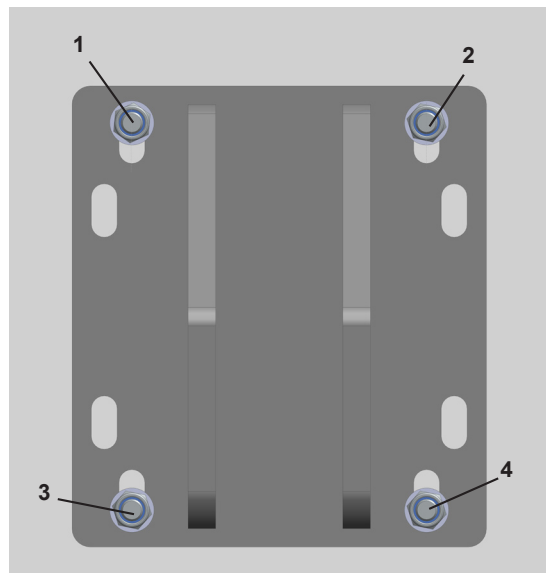
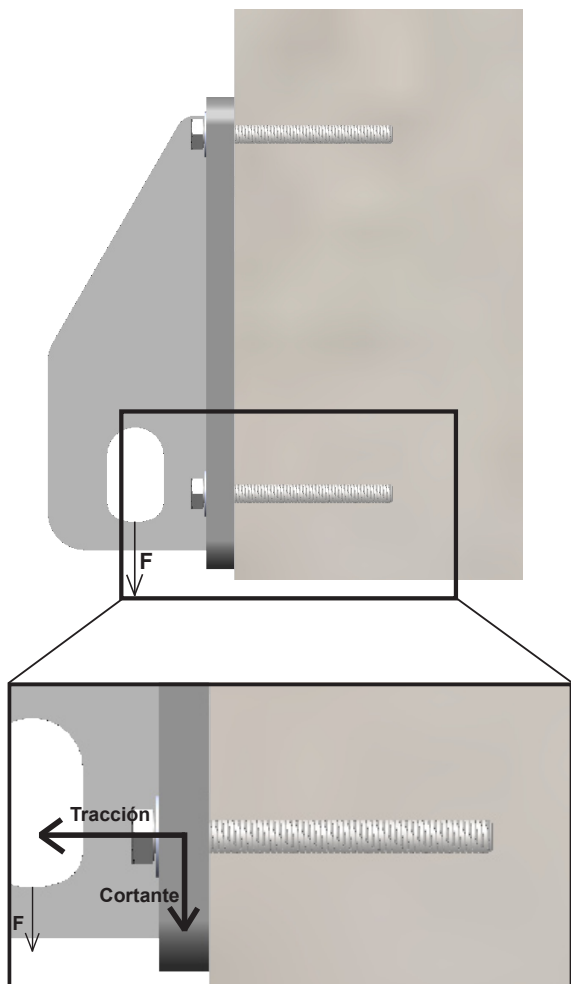
It is strictly forbidden:

- 1- Modify the characteristics of the plate without written authorization from the manufacturer.
- 2- Place the Placfix V Suspension Plate on a non VERTICAL slab.
- 3- Place the Placfix V Suspension Plate on an unsuitable support.
- 4- Entrust the use of the Placfix V Suspension Plate to untrained persons or persons who have not read this manual.
- 5- Use the Placfix V Hanger Plate with suspended platforms equipped with lifting devices with a load capacity greater than their nominal capacity (note that accidental impact of the load on elements in the work area can cause overloading).
- 6- Balance the platform intentionally.
- 7- Use the Placfix V Suspension Plate in operating conditions or environments that do not conform to its characteristics.
- 8- Use a Placfix V Suspension Plate in poor condition due to wear or deformation.
- 9- Fix the Placfix V Suspension Plate on the slab by other means than those described in this manual.
- 10- Place the Placfix V Suspension Plate on a slab whose resistance has not been previously verified.
- 11- Stay or pass under a PST or make this platform pass over people.
- 12- It is extremely dangerous and contrary to uses, directives and regulations to voluntarily overload a lifting device. In this case Accesus will not be responsible for any damage.

## 7- Loads transmitted by the Placfix V Suspension Plate

- The maximum working load is  $F = 500 \text{ kg}$ .

- According to the UNE-EN 1808 standard, the anchorage point must withstand the increased reaction with a safety coefficient of 3.



|  | Tensile stress | Shear stress |
|--|----------------|--------------|
| No major reaction at each anchorage (1, 2, 3, 4) | 0,45 kN        | 1,5 kN       |

The plate must be anchored by at least 4 anchors. (See section 5)

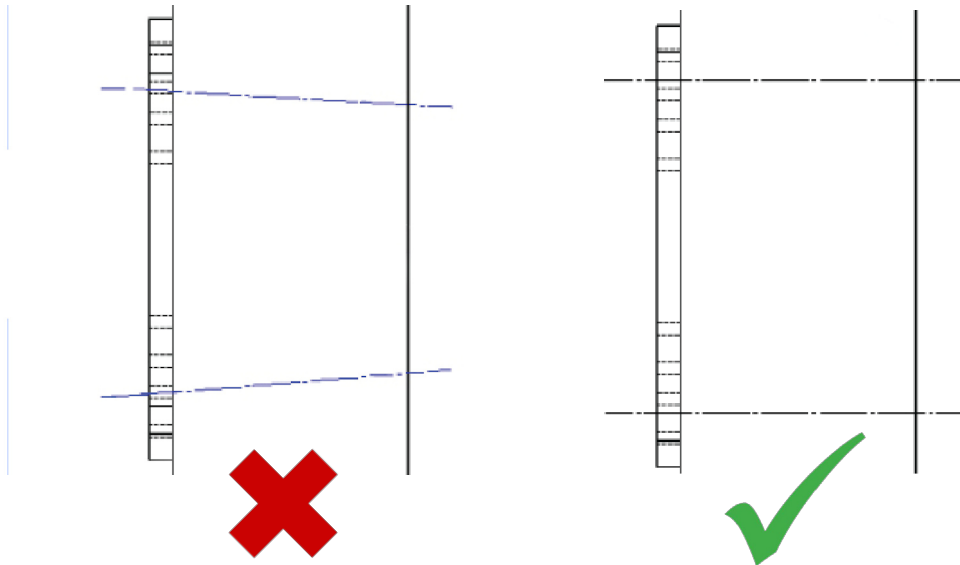
## 8- Assembly

### 8.1- Mounting configuration mechanical anchorage

To fix the anchor plate by means of mechanical anchorage we use 4 Hilti® HST M12x115/20 screws. The steps to follow will be:

1- We will place, where desired, the plate on the face of the slab to mark the 4 holes to be drilled. It should be noted that the plate has 8 flanges where we will choose the 4 that best suit our slab. (See section 5)

2- We make the **4 holes with a 12 mm diameter drill bit**, trying to maintain the perpendicularity of these with the face of the slab. (See section 5)



3- We clean the drills of dust, water, dirt, etc..

5- We introduce and anchor Hilti® HST M12x115/20 inside the holes.

6- We place the Placfix V suspension plate, making the anchors appear through the coliseum of the same.

7- Finally we thread the anchors with the nuts applying a 60Nm torque.

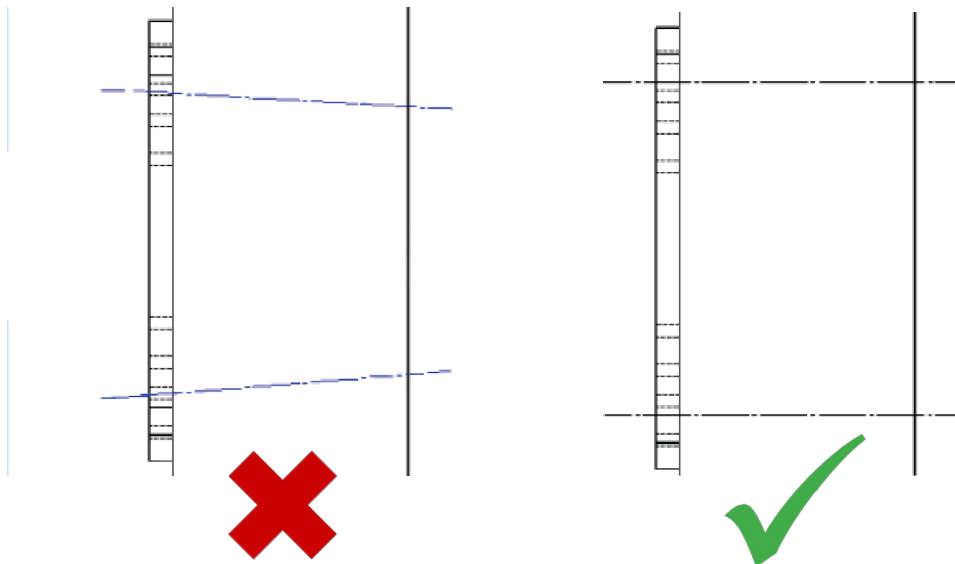


## 8.2- Mounting configuration chemical anchorage

In case of fixing the plate by means of **chemical anchorage** we will use 4 Hilti® HAS M12x110/28 screws with HIT HY50 chemical cartridge or similar. For them we will follow the following methodology:

1- We will place, where desired, the plate on the face of the slab to mark the 4 holes to be drilled. It should be noted that the plate has 8 colisos where we will choose the 4 that best suit our slab. (See section 5)

2- We make the **4 holes with a 14 mm diameter drill bit**, trying to maintain the perpendicularity of these with the face of the slab.



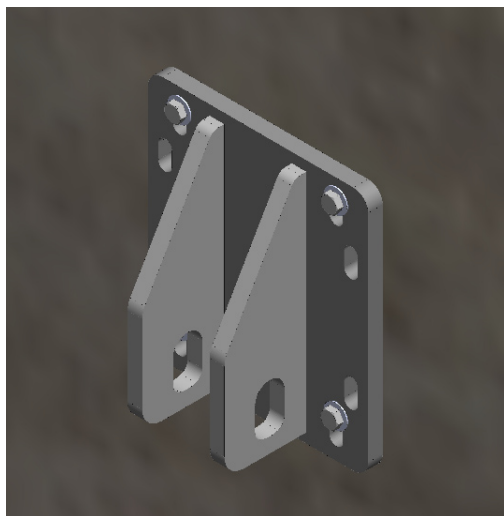
3- We clean the drills of dust, water, dirt, etc..

4- We inject the Hilti® HIT HY150 Max resin into the drilled holes

5- We introduce and place the Hilti® HAS M12x110/28 rods inside the holes.

6- We place the Placfix V suspension plate, making the rods appear through the coliseum of the same.

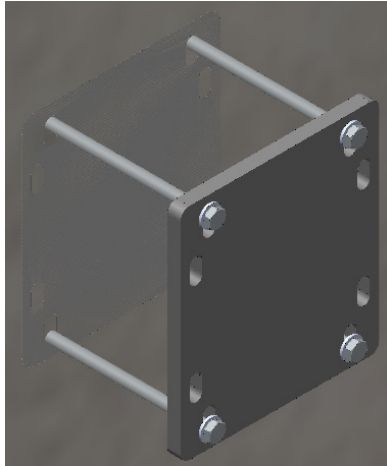
7- Finally we thread the rods with the nuts applying a 50Nm torque.



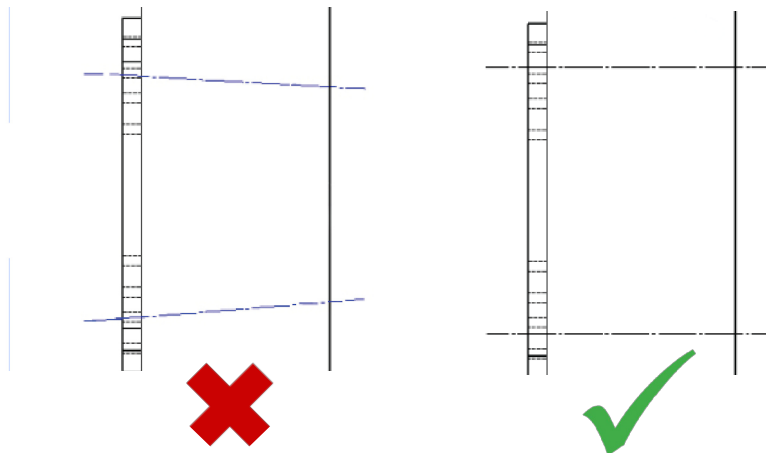
### 8.3- Anchorage configuration assembly threaded rods

If we want to fix the Placfix V suspension plate by means of the M12 threaded rods we will follow the following steps:

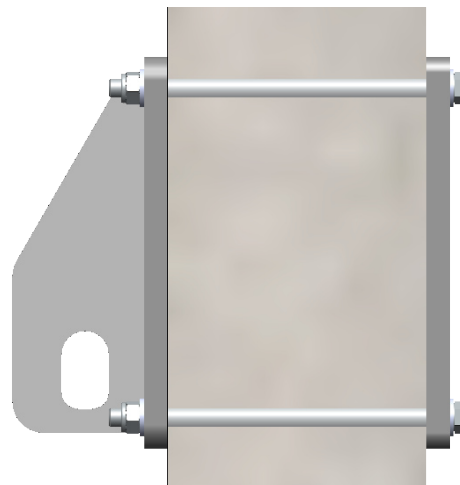
1- We will place, where desired, the counterplate on the face of the slab to mark the 4 holes to be drilled. It should be noted that the plate has 8 flanges where we will choose the 4 that best suit our slab. (See section 5)



2- We will then drill the 4 **holes on the slab with a 14 mm diameter drill bit**. It is very important to carry out this operation keeping the holes perpendicular to the face of the slab.



3- Finally we will center the plate on the opposite side of the slab with respect to the holes made and we will fix it to the counterplate thanks to its threaded rods with a torque of 62 Nm.



## 9- Mounting the cables



**DANGER!**

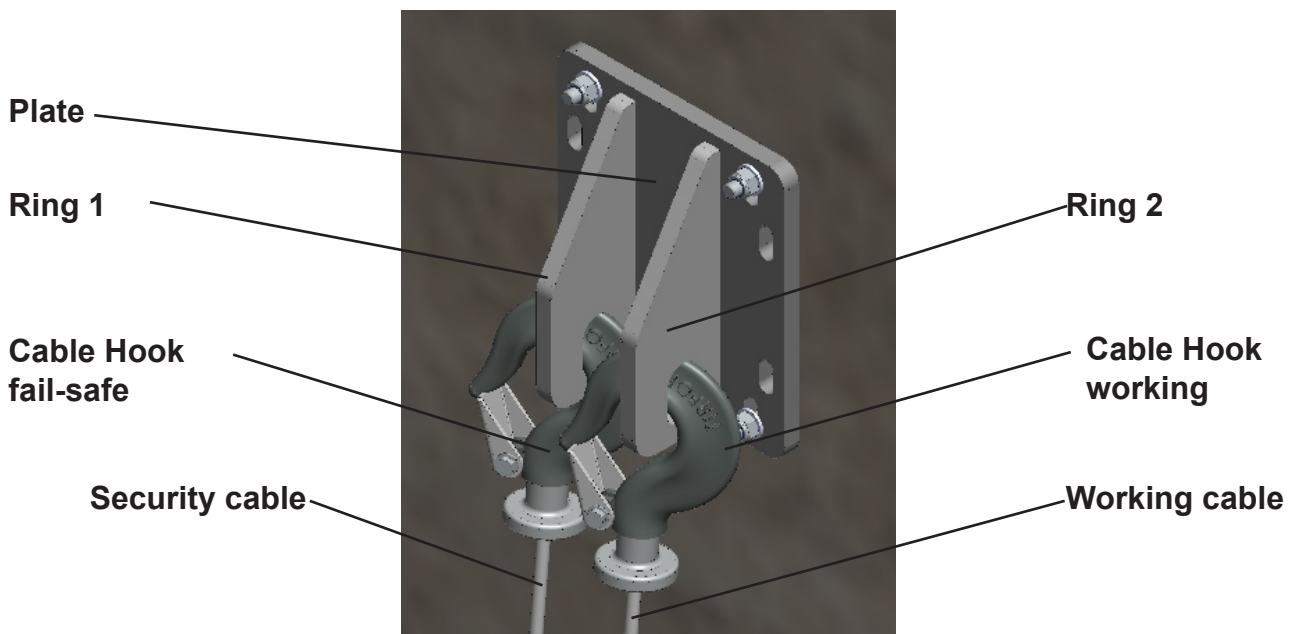
|   |  |
|---|--|
| <p><b>Damage due to cable handling.</b></p>   | <p>Danger of cuts and scratches<br/>Risk of death from falling objects, falling to different levels and/or breaking.</p>   |
| <p><b>Risk of injury from falling objects, falling to different levels and/or breakage.</b></p> | <p>-Before mounting the cables, make sure that the suspension structure has sufficient capacity to withstand the stresses due to the suspended loads, described in section 8 of this manual.<br/>-Use suitable PPE: harnesses, protective gloves, safety boots, safety helmet, etc.<br/>-Only use the cables specified by the manufacturer.<br/>-Make sure that the diameter of the cable corresponds to that indicated on the plate of the lifting and fall arrest equipment, that the length of the cable is sufficient for the height of the work to be carried out and that the tip is correct.<br/>-Avoid the formation of loops when handling the cables.<br/>-Place the platform under the suspensions.</p> |

Two operators are required to install the cables: one on the scaffolding and the second at suspension level. The latter must be equipped with a harness that is anchored to a sufficiently strong anchorage point.

1- Unwind the lifting and safety cables from the ground by lifting them with a rope, not letting them fall to unwind.

2- Adjust the distance between the plates so that it is equal to the distance between the lift supports on the platform.

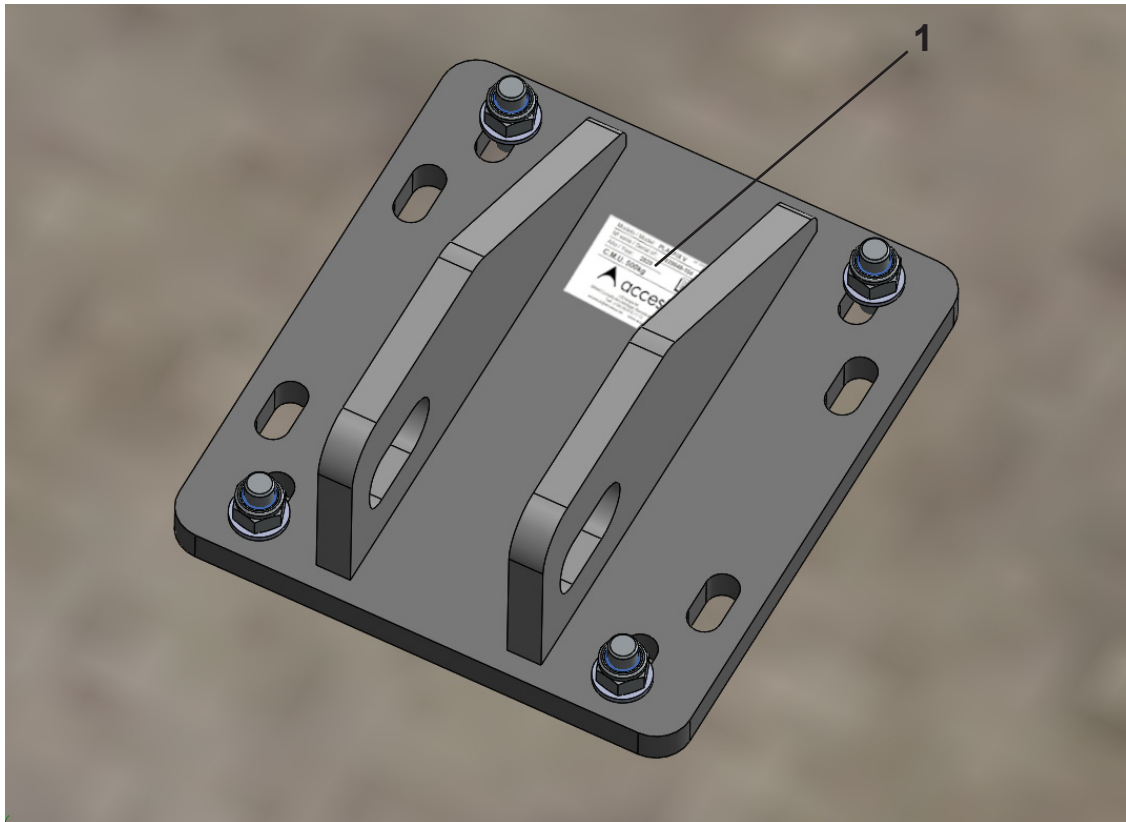
3- Hook the cables to the plate eyebolts separately. This way one ring will hold the lift cable and the other the safety cable. The hook lock must be perfectly closed. It is mandatory to use these two independent anchorage points:







## 10- Labels

Check that the label is in place.



Identification label (1)

|   |  |
|---|--|
| Modelo / Model: <b>PLACFIX V</b>  | ref.: 020049-000E  |
| Nº serie / Serial nº: <b>020049-XXX</b>   |  |
| Año / Year: <b>2020</b>   |  |
| <b>C.M.U. 500kg</b>   |  |
|   |  |
| c/Energia 54<br>08940 Cornellà de Llobregat, Barcelona-SPAIN<br>Telf.: (+34) 93 475 17 73<br>accesus@accessus.es    www.accessus.es |  |

## 11- Maintenance



**DANGER!**

**Risk of injury and death from falling objects, falling to different levels, breakage and/or electrical contact.**

Risk of death due to falling objects, falling to different levels and/or breakage.

-Stop work immediately.

-Determine the cause and remedy the fault.

-Use only ACCESUS original parts, otherwise the manufacturer cannot guarantee the safety of the equipment.

The equipment covered by this instruction manual must be serviced annually by the ACCESUS maintenance department or an ACCESUS authorized repairer.

The periodic maintenance of the Placfix V 020049 Suspension Plate consists of

- 1- A daily check of the general condition of the plate by the operator.
- 2- A control of the optimum state of cleaning carried out daily by the operator.
- 3- A visual control of the side plates and the anchoring system used (observing if there are cracks, deformations...) carried out quarterly by the operator.
- 4- A visual control of the wear and tear of the plate and screws carried out by the operator every six months.
- 5- A control of the state of the slab carried out every six months by the operator.



