



WIND ENERGY CATALOGUE

“ Let’s leave  
the **children**  
a better world



INDEX	3
-------	---

WHO WE ARE	4
------------	---

Mission	4
---------	---

Vision	5
--------	---

Values	5
--------	---

PLATFORMS FOR WIND TURBINES MAINTENANCE: MODUBLADE	6
---	---

Presentation	6
--------------	---

Safety devices	7
----------------	---

Uses	8
------	---

Main features	10
---------------	----

Models	12
--------	----

PPEs FOR WORKING AT HEIGHT	14
----------------------------	----

Modublade's accessories at height	14
-----------------------------------	----

ACCESUS SERVICES	16
------------------	----

1

At Accesus we are specialists in the development and manufacture of equipment for **working at height** and **suspended platforms** with **more than 10 years of experience** in the development of equipment for the **wind power** sector.



2

We offer **platforms for the maintenance of blades and towers**, **personal protective equipment (PPE) for working at height** and **training** anywhere in the world.



3

We work in close contact with **manufacturers and companies in the wind sector** to adapt and develop special equipment and procedures.





4

Accesus works with ease in all kinds of **environments and activities**, as well as with all kinds of **interlocutors**.

We are recognized **national leaders**, with a strong **international projection**, by our users, employees, clients and suppliers in the suspended platforms and work at height sector.

5

**Passion:** committed with heart and mind.

**Innovation:** we constantly study ways to improve processes and products.

**Quality:** we seek excellence.

**Corporate Social Responsibility:** committed to the environment.

**Customer Service:** aimed at satisfying our customers through our products and services.

**Flexibility:** easily adaptable to changes.

**Permanent training:** we are committed to the continuous training of our staff.

**Modublade** is the main **Accesus platform for wind turbines** from which the rest of the models of the family have been created.



Made of aluminum



Fully removable



Certified for lifting people and loads



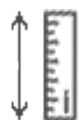
Integrated security system



Standard length of the platform of 1.6 m



Dead weight of 200 Kg



Unlimited height



Non-slippery floors



Capacity for 2 operators maximum



Maximum load capacity of 300 Kg



Front handrail's height of 1 m and rear and side handrail's height of 1.3 m



3 EN795 anchor points

Suspension system by double wire rope, one of work and another of safety.

Safety coefficient of the wire ropes superior to 8.



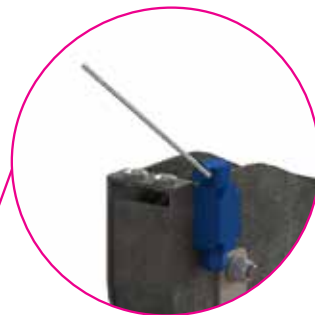
Electric wire rope hoist certified for lifting people. Equipped with brake, emergency descent and overload detector.



Fall arrester safety device with overspeed lock and emergency stop.



Attachable side storage drawer to safely transport objects at height.

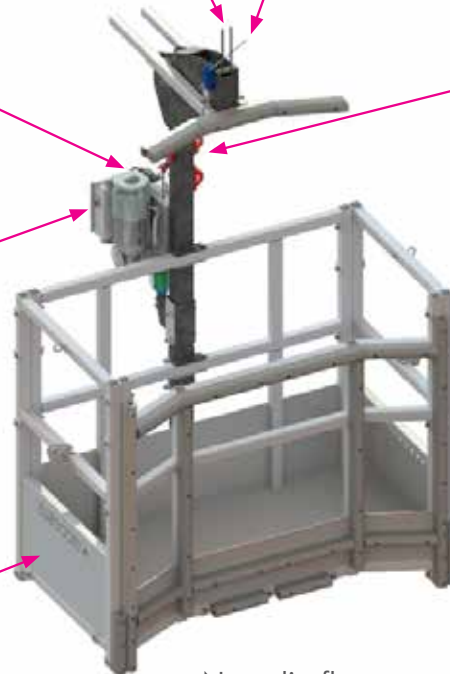


End and upper limit switches.

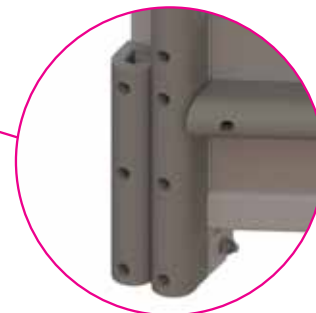
Contact system at the top of the platform with the tip of the blade.



Anchor points EN795 for anchorage of operators and rescuer, emergency descent.



1 m of height for front handrail.  
1.3 m of height for rear and side handrails.



Flexible white rubber protections to prevent damage and color marks.

Non-slip floor.  
Full control of position from the platform (height and guidance).  
Gauge light.  
Acoustic overload warning and S.O.S indicators.





Access to **wind turbine's blades and towers** for cleaning or maintenance works.

Tower maintenance (**joint repair**).





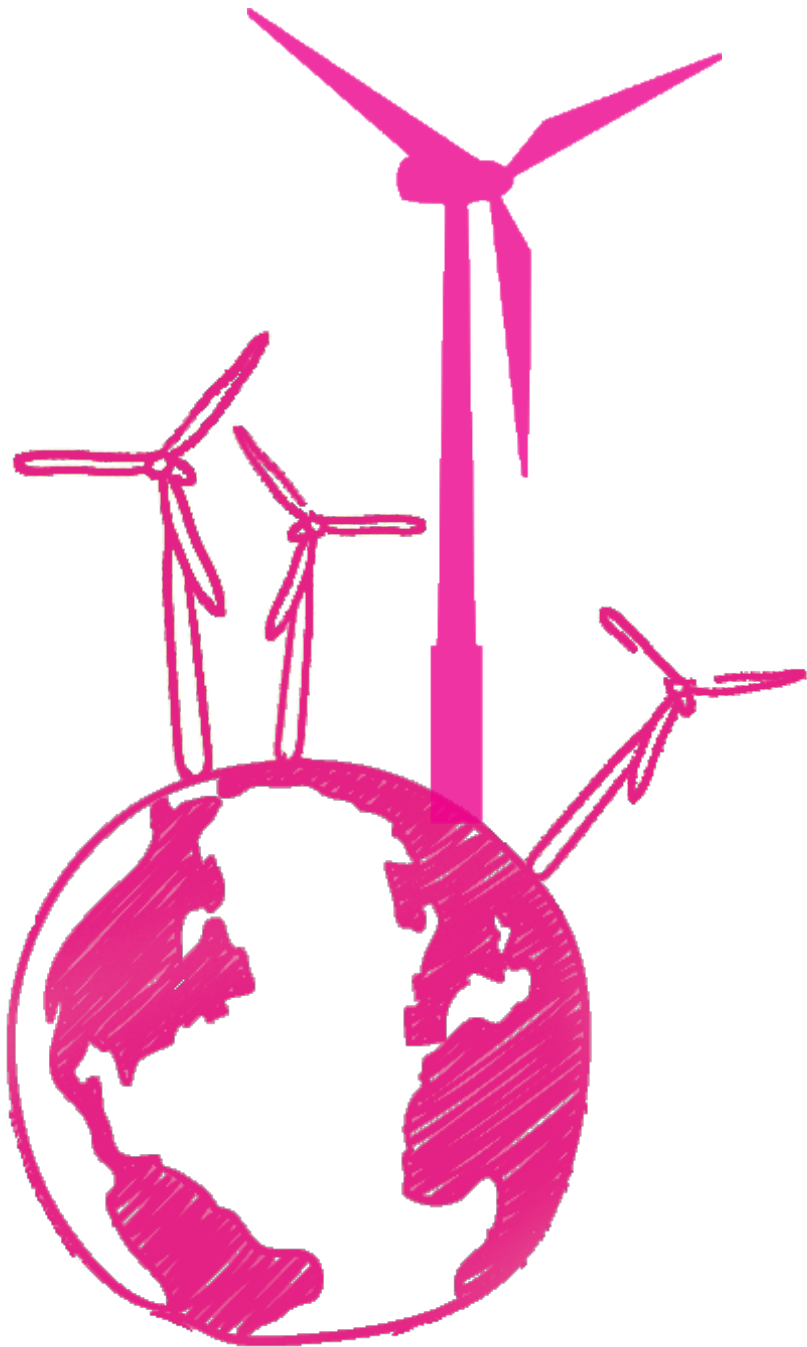
Blade Maintenance (**tip**).



Tower & blade's **cleaning** works.



Blade Maintenance (**root zone**).



Suitable for all types of wind turbines. Used in wind turbines from 30 m to 150 m in height. Blades up to 4.5 m wide.



Certified, homologated, approved, used by main wind turbine manufacturers such as Siemens-Gamesa, Nordex Acciona, Vestas, Bonus, General Electric or Made.



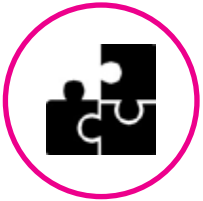
Complete instruction manual. Training for assembly, use and maintenance of the machine.



Design adapted to the shape of the blade with flexible white rubber protections to avoid damages.



Equipped with all the necessary systems to offer the best performance in terms of safety and rescue.



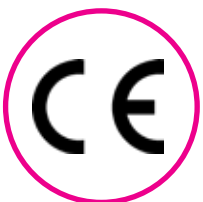
Small pieces, made of aluminum. Customizable: the equipment adapts to each situation, offering special installation guides for each wind turbine model.



Transport completely assembled or semi-mounted on trailer or van. Easily dismantled and palletized to facilitate long distance transports.



Unlimited distance between the blade and the turbine tower. The cable guide system allows the platform to be separated from the tower with no limits.

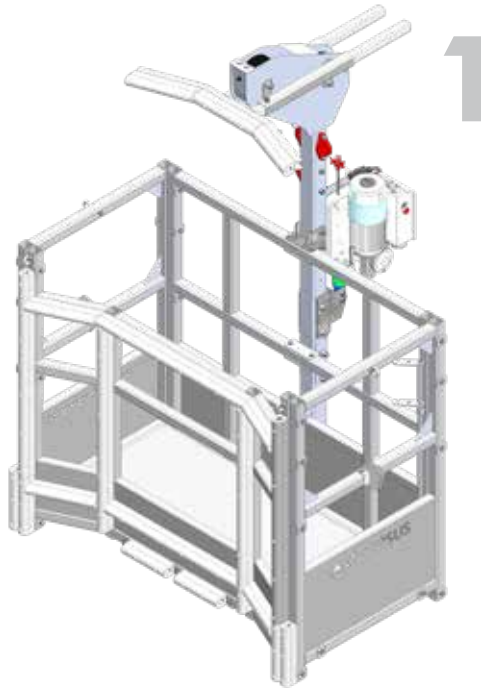


CE marked. European Directive 2006/42/EC. European Directive 2006/95/EC. European Directive 2004/108/EC. EN ISO 12100:2010. UNE-EN 1808:2015.

Over the years, the Accessus **Technical Office Department** has developed different variants of the **Modublade** platform to **adapt to** Get to know them!



Add HABITAT to your Modublade to create a temperature and humidity controlled working area.



1

## Modublade II



Model with 2 possible configurations (1.6 or 2 m wide).



In constant evolution since 2010.



More than a 100 units manufactured and supplied worldwide.

3

## Modublade U3.4



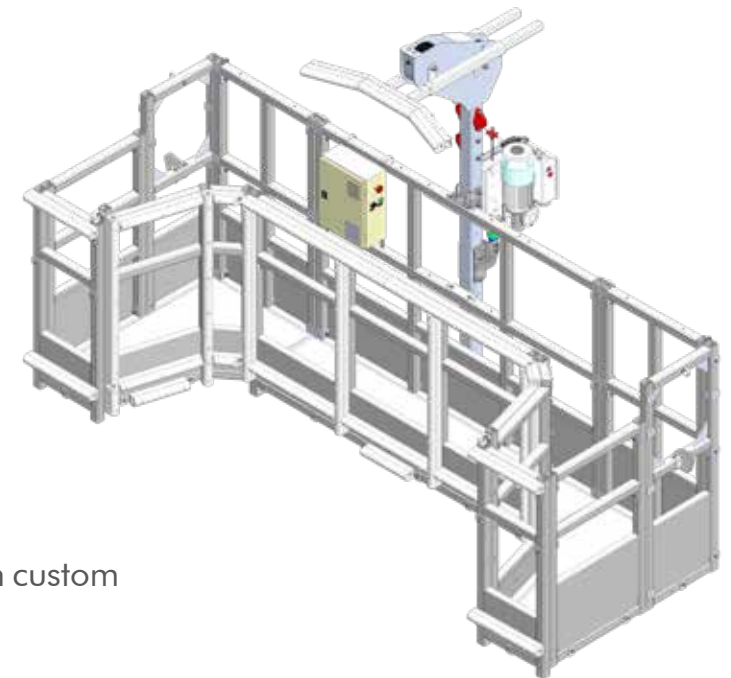
Maximum range to blade's surface (3.4 m wide).



Total control of the platform's position with regard to the guiding wire rope from the platform.



Complete adaptability to the special geometry of wind turbine blades with custom protections.



**specific needs and requirements** of our clients.

## 2

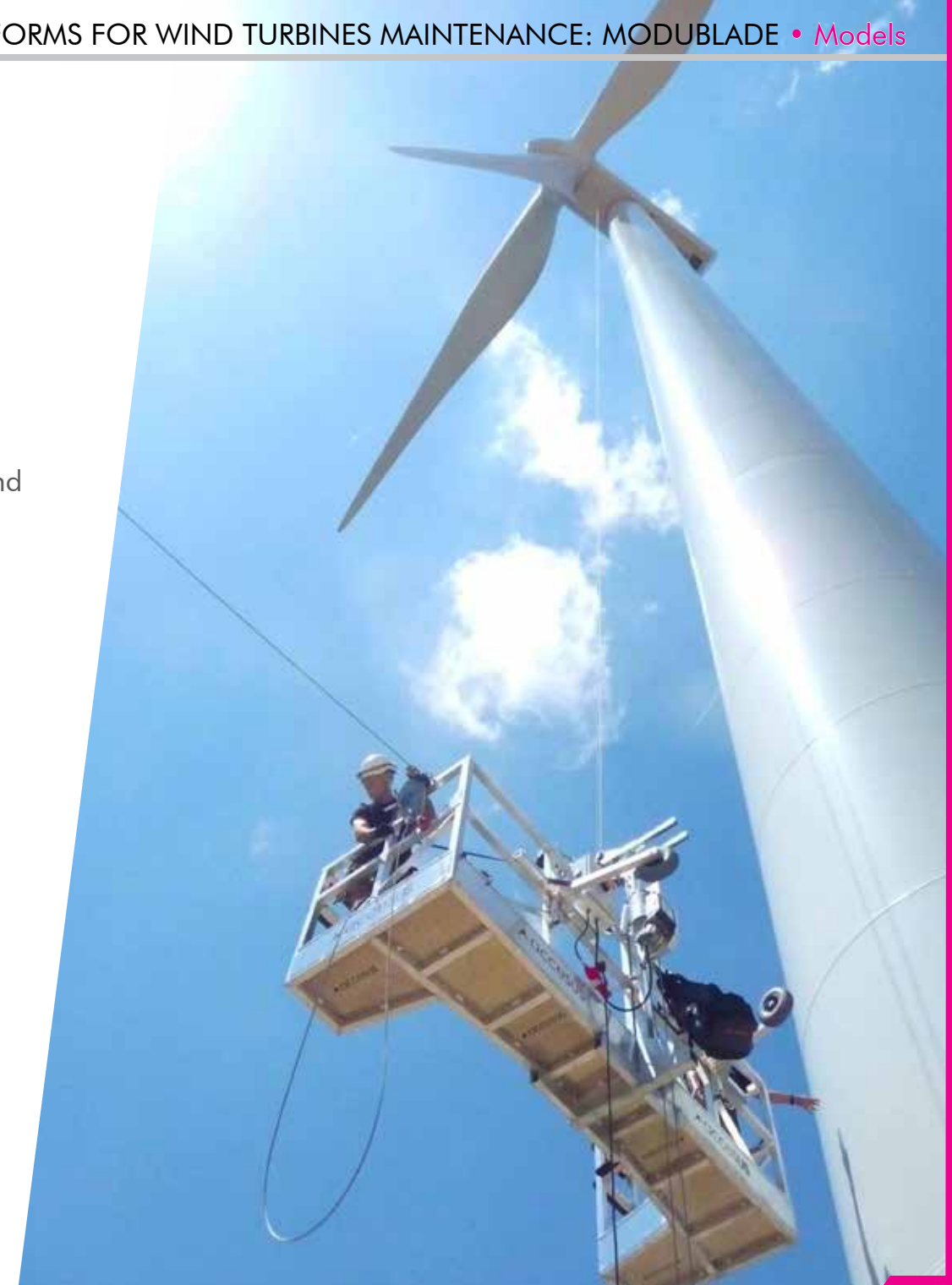
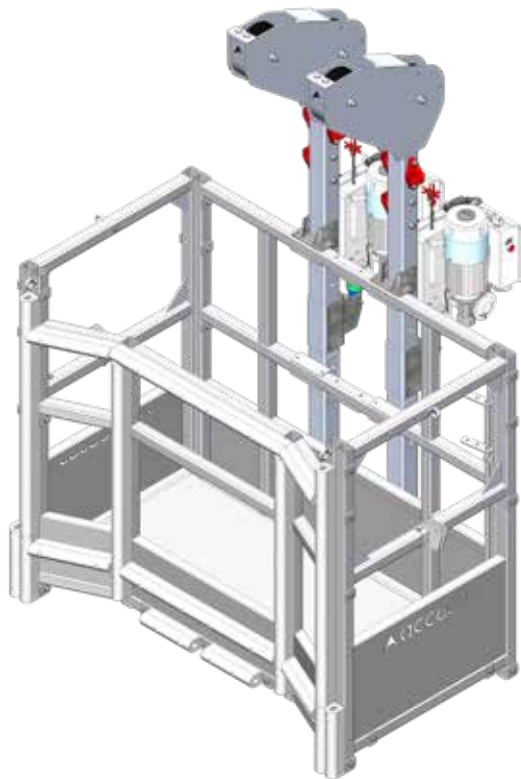
### Double Point Modublade



This model shares 99% of Modublade II pieces.



You can add a second lifting hoist in order to attend special needs.





Several years of experience in the sector has allowed Accesus to develop a very **complete range of PPEs** that perfectly adjusts to the needs of the wind energy sector. Take a look at the most demanded ones:

## 1 Harnesses



### A51 E

Rotating positioning belt and automatic closures harness.



### A73

High-class harness for suspended works.

## 2 Lanyards and anchor points



### PAT 900

20 mm wide polyester strap anchor point.

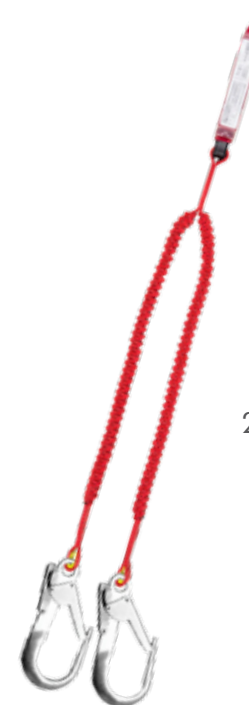
22 kN and 6 available lengths:  
0.3, 0.6, 0.8, 1.2, 1.5 and 2 m.



### PAC 410

Steel sling with 8 mm grommets to connect with a carabiner.

15 kN and 3 available lengths:  
0.5, 1 and 2 m.



### 612404-020

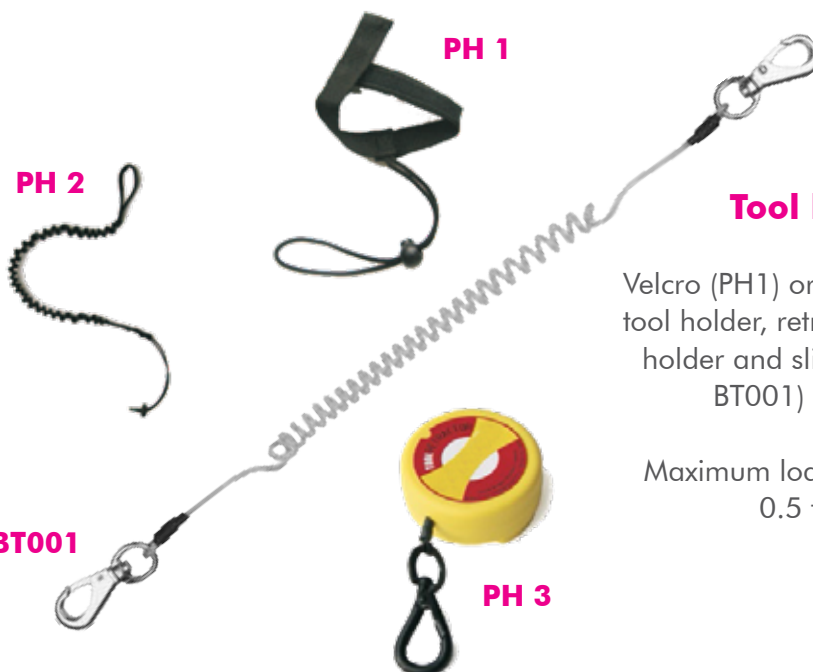
2 m elastic double fall arrest lanyard.

### 3 Fall arrest accessories



**CT 205**

Anti-trauma tape to prevent accidents and relieve groin pressure in falls from height.



**Tool holders**

Velcro (PH1) or elastic (PH2) wrist tool holder, retractable (PH3) tool holder and sling-type (PH040-BT001) tool holder.

Maximum load capacity: from 0.5 to 2 Kg.

**PH 040-BT001**

### 4 Tool & PPEs Bags



**BLS 11K**

PPEs PVC bag with double adjustable strap closure.

60x30x30 cm.

33 l capacity.



**BLS 502**

Canvas tool bag with outer and inner pockets.

40x30x30 cm.

25 l capacity.

In addition to manufacturing suspended platforms and offering the safest and most specialized PPEs for working at height, Accesus is also



### Custom designs:

We offer technical field studies reports with case studies offers, we provide the customer with all the detailed technical sheets, user's manuals and certifications of our products and try to accomplish all our client's needs.



### Renting:

The rental of suspended platforms equipment like Modublade II, Modublade U3.4 and Doble-Point Modublades means an important part of Accesus activity in Europe and all over the world.



### Accesus Global Training:

Accesus offers all kind of training courses to serve our clients wherever is needed: commercial trainings to distributors, user training for the correct use of our platforms and training programs for equipment maintainers.

characterized by offering **a set of value-added services** to our customers:



### Maintenance & After Sales:

In Accessus you'll find a strong After Sales team made of qualified technicians and you'll also be able to get a maintenance and warranty certificate for each Modublade platform you get.



### Assembly & Set Up:

We have our own trained and experienced staff for assembling and setting up our Modublade suspended platforms in our facilities or outdoors.



### I+D+i:

Accessus Technical Department is continuously developing new prototypes in order to improve our own products for our customers.









[www.accesus.es](http://www.accesus.es)

[accesus@accesus.es](mailto:accesus@accesus.es)

(+34) 93 475 17 71

54 Energia Street, 08940,  
Cornellà de Llobregat,  
Barcelona (Spain)

# accesus

*taking you to the top*



[www.accesus.es](http://www.accesus.es)

